

WOLFGANG RADL
INSPIRED BY ANTONIO VIVALDI
DRUM LOOPS BY NORBERT WALLNER
WRITTEN FOR TUESDAY MICROGROOVES

WINTER DREAMS
PART I - III

PIANO
BASS
DRUMS

2 FLUTES
2 OBOES
2 CLARINETS IN B♭
2 BASSOONS
2 HORNS IN F
2 TRUMPETS IN C
2 TROMBONES
BASS TROMBONE
CONGAS/TIMPANI
SHAKER/BASS DRUM
TAMBOURINE
SOLO VIOLIN
VIOLIN I
VIOLIN II
VIOLA
VIOLONCELLO
DOUBLEBASS

(C) 2012

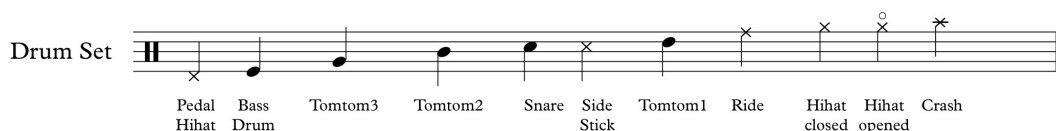
PREFACE

Antonio Vivaldi's *Winter* from his fabulous violin concertos *The four Seasons (Le quattro stagioni)* inspired, since its first appearance in 1725, a huge number of arrangers of all musical genres. So - is it even nowadays possible to find new (and unique) artistic interpretations of this baroque masterpiece?

The Austrian arranger Wolfgang Radl embraced that challenge. With Norbert Wallner, the drummer of his band tuesday microgrooves, he created a novel approach to this 300 year old piece. He changed the original string score by putting some new parts for a jazz trio inside and reharmonized other elements in a jazz and pop format.

Finally, Vivaldi's *Winter* got a fancy mixture of jazz, pop, drum'n'bass and classical music -
enjoy the experience!

DRUM NOTATION



DRUM PARTS

Player I: Congas/tacet/Timpani

Player II: Bass Drum, Shaker/tacet/Bass Drum

Player III: tacet/tacet/Tambourine

PERFORMANCE NOTE

The Jazz Trio must be amplified. If possible, the piano part shall be performed on a concert grand.
The bass part shall be played on an upright bass.

DURATION

Part 01: approx. 4'30"

Part 02: approx. 4'10"

Part 03: approx. 4'20"

PART I

Winter Dreams Part I

Wolfgang Radl, inspired by Antonio Vivaldi
drum set arrangement by Norbert Wallner

♩ = 85

Flute a2

Oboe a2

Clarinet in B \flat a2

Bassoon a2

Horn in F a2

Trumpet in C a2

Tenor Trombone a2

Bass Trombone

Shaker
mf
s

Congas
mf
s

Violin Solo

Violin I

Violin II

Viola

Violoncello

Double Bass

Piano

Bass
Fm 7
pizz.

Drums
♩ = 85

(4)

(4)

2

5

Sh.

Congas

Piano

Bs.

Dr.

9 **A**

Timp.

Sh.

Congas

VI. Solo

VI. I

VI. II

Vla.

Vc.

Piano

Bs.

Dr.

This musical score page contains the following parts and details:

- Timp.:** Three measures of rests.
- Sh.:** Three measures of rests.
- Congas:** Three measures of rests.
- VI Solo:** Treble clef, 3/4 time. Measures 13-15 feature a melodic line with trills (tr) and a dynamic marking of *mf*.
- VI I:** Treble clef, 3/4 time. Measures 13-15 feature a melodic line with a dynamic marking of *mf*.
- VI II:** Treble clef, 3/4 time. Measures 13-15 feature a melodic line with a dynamic marking of *mf*.
- Vla.:** Alto clef, 3/4 time. Measures 13-15 feature a melodic line with a dynamic marking of *mf*.
- Vc.:** Bass clef, 3/4 time. Measures 13-15 feature a melodic line with a dynamic marking of *mf*.
- Db.:** Bass clef, 3/4 time. Measures 13-15 feature a melodic line with a dynamic marking of *p*.
- Piano:** Grand staff (treble and bass clefs). Measures 13-15 feature a complex accompaniment with a dynamic marking of *p*. Chord symbols $C\#m^{(b5)}$, Fm^7 , and Bbm^7 are indicated above the staff.
- Bs.:** Bass clef, 3/4 time. Measures 13-15 feature a melodic line with a dynamic marking of *p*. Chord symbols $C\#m^{(b5)}$, Fm^7 , and Bbm^7 are indicated above the staff.
- Dr.:** Three measures of rests.

16

This musical score page contains measures 16 through 19. The instruments and parts are as follows:

- Bsn. (Bassoon):** Four measures of whole rests.
- Timp. (Timpani):** Four measures of whole rests.
- Sh. (Shofar):** Four measures of whole rests, with a circled '8' above the first measure.
- Congas:** Four measures of whole rests, with a circled '8' above the first measure.
- VI Solo (Violin Solo):** Four measures of eighth-note patterns with trills (tr) above each note.
- VI I (Violin I):** Four measures of eighth-note patterns.
- VI II (Violin II):** Four measures of eighth-note patterns.
- Vla. (Viola):** Four measures of eighth-note patterns.
- Vc. (Violoncello):** Four measures of eighth-note patterns.
- Db. (Double Bass):** Four measures of eighth-note patterns.
- Piano:** Four measures of accompaniment with chords F, G7/F, F#(b5), and G7.
- Bs. (Bass):** Four measures of eighth-note patterns with chords F, G7/F, F#(b5), and G7.
- Dr. (Drum):** Four measures of whole rests, with a circled '4' above the second measure.

B

20

Fl. *p* primo

Ob. *p* primo

Cl. *p* primo

Bsn. *p* primo

Timp.

Sh. To B. D.

VI. Solo *f* *tr*

VI. I *f* *p* *f*

VI. II *f* *p* *f*

Vla. *f* *p* *f*

Vc. *f* *p* *f*

Db. *f* *p* *f*

Piano *p* Cm⁷

Bs. Cm⁷

Dr. **B**

Detailed description: This page of a musical score covers measures 20, 21, and 22. The woodwind section (Flute, Oboe, Clarinet, Bassoon) plays a sustained note in the first measure, marked *p* and *primo*. The strings (Violins I & II, Viola, Violoncello, Double Bass) play a rhythmic pattern of eighth notes, with dynamics ranging from *f* to *p*. The Piano part features a steady accompaniment of eighth notes in the right hand and chords in the left hand, marked *p* and Cm⁷. The Snare Drum (Sh.) has a single hit in the first measure, labeled 'To B. D.'. The Drum set (Dr.) has a pattern of eighth notes in the second and third measures, marked with a **B** box.

23

Fl.

Ob.

Cl.

Bsn.

Timp.

VI. Solo

VI. I

VI. II

Vla.

Vc.

Db.

Piano

Bs.

Dr.

p

p

p

p

p

tr

A^bma⁷

A^bma⁷

25

Fl. *a 2*
p

Ob. *a 2*
p

Cl. *a 2*
p

Bsn. *a 2*
p

Timp.

VI. Solo *tr*
mf tutti

VI. I *f*
mf

VI. II *f*
mf

Vla. *f*

Vc. *f*

Db. *f*

Piano Cm7 C7

Bs. Cm7 C7

Dr. (4)

Detailed description: This page of a musical score covers measures 25, 26, and 27. The woodwind section (Flute, Oboe, Clarinet, Bassoon) plays a sustained melodic line in the key of C minor, marked *p* and *a 2*. The strings (Violins I & II, Viola, Violoncello, Double Bass) are marked *f* and play a rhythmic accompaniment. The Violin Soloist (VI. Solo) has a trill in measure 25 and enters in measure 27 with a *mf* dynamic. The Piano part features a steady accompaniment with Cm7 and C7 chords. The Bassoon (Bs.) part has a rhythmic line with Cm7 and C7 chords. The Drums (Dr.) play a simple pattern of four strokes.

C

28

Fl. *f*

Ob. *f*

Cl. div. *f*

Bsn. *f*

Timp.

Sh. Bass Drum *f*

Congas *s*

VI. Solo *f*

VI. I *f*

VI. II *f*

Vla. *mf* *f*

Vc. *mf* *f*

Db. *p* *f*

Piano *f*
 Fm⁷ Fm^{7(b9)} F Bbm⁷/F Bbm⁷/F C

Bs. *f*

Dr. C *f*